



AW23 SUSTAINABLE OPTICAL COLLECTION





## O'NEILL SUSTAINABLE EYEWEAR AW23 INSPIRED BY THE PROBLEM OUR OCEANS ARE FACING

Leading the way in an industry wide change to create sustainable eyewear, the new collection for O'Neill is thoughtfully aligned with O'Neill's Blue mission to protect our oceans. This collection is handcrafted in bio-based acetate, a sustainable material that reduces the consumption of fossil fuels and features recyclable demo lenses and nose pads.

Inspired by a genuine love of the ocean, this innovative collection features fun, stylish shapes and a sun-drenched colour palette of ocean hues. Ultra high density acetate provides a slim profile and combines with elements from our natural playground including wood and cork temple detailing, as well as wood embedded signature logo in temple tip to deliver premium quality frames that will have you searching for endless summers and outdoor adventures.

- ♦ 4 x full frame models
- ♦ 2 x male / 2 x female
- ♦ Eye sizes ranging from 49 to 54
- ♦ Bio-based acetate
- ♦ Recyclable demo lenses
- ♦ Pops of colour throughout
- ♦ Signature wooden tip plaque printed with O'Neill logo

#oneilleyewear    #teamoneill





ONB 4008 - 102

Gloss tort



ONB 4008 - 108

Gloss dark grey crystal

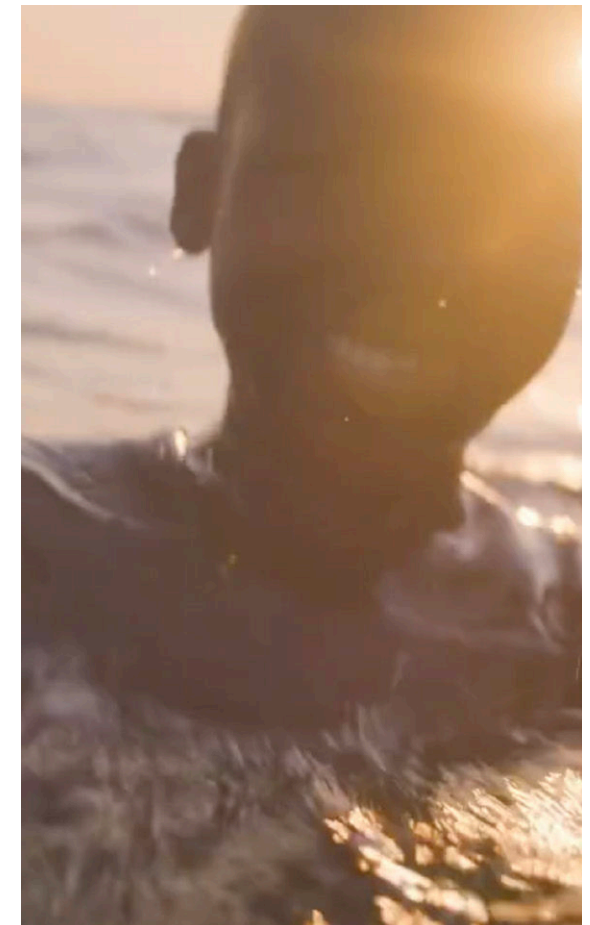


ONB 4008 - 118

Gloss tobacco

## ONB 4008

Soft rectangular bio-acetate frame.



### TECHNICAL SPEC

- Bio-acetate frame and temples
- Recyclable demo lenses
- Spring hinges

### SIZING

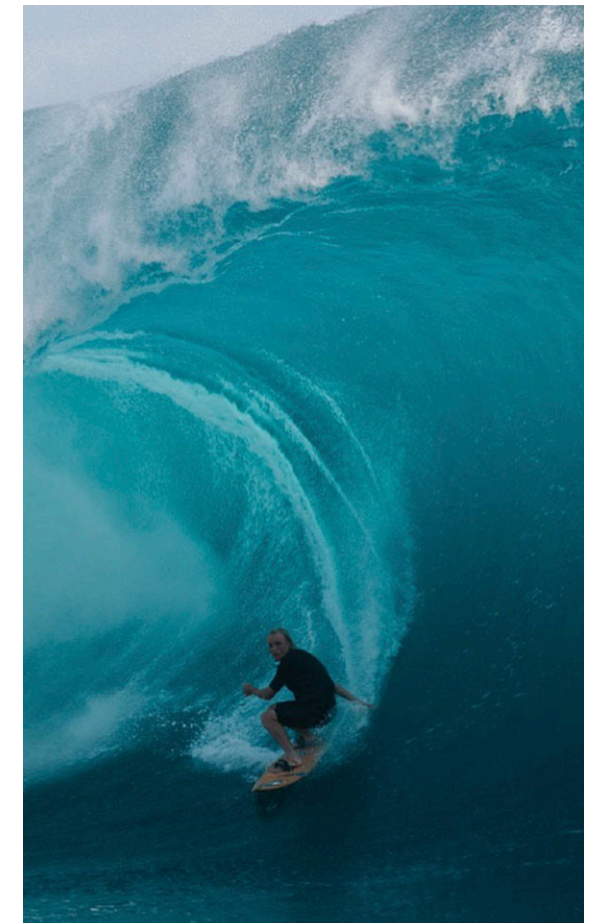
A measurement:	54	ED measurement:	58.7
B measurement:	41	Panto angle:	7
DBL measurement:	17	Base curve:	450
Temple length:	140		





## ONB 4015

A bio-acetate soft square frame with a classic keyhole bridge.



ONB 4015 - 104

Matte black



ONB 4015 - 106

Gloss blue crystal fade



ONB 4015 - 108

Gloss grey crystal

### TECHNICAL SPEC

- Bio-acetate frame and temples
- Recyclable demo lenses
- Spring hinges

### SIZING

A measurement:	54	ED measurement:	58.5
B measurement:	41.5	Panto angle:	9
DBL measurement:	20	Base curve:	450
Temple length:	140		



**ONB 4026 - 102**

Gloss tort / Black



**ONB 4026 - 118**

Matte tobacco / Tort



**ONB 4026 - 172**

Matte pink crystal

## TECHNICAL SPEC

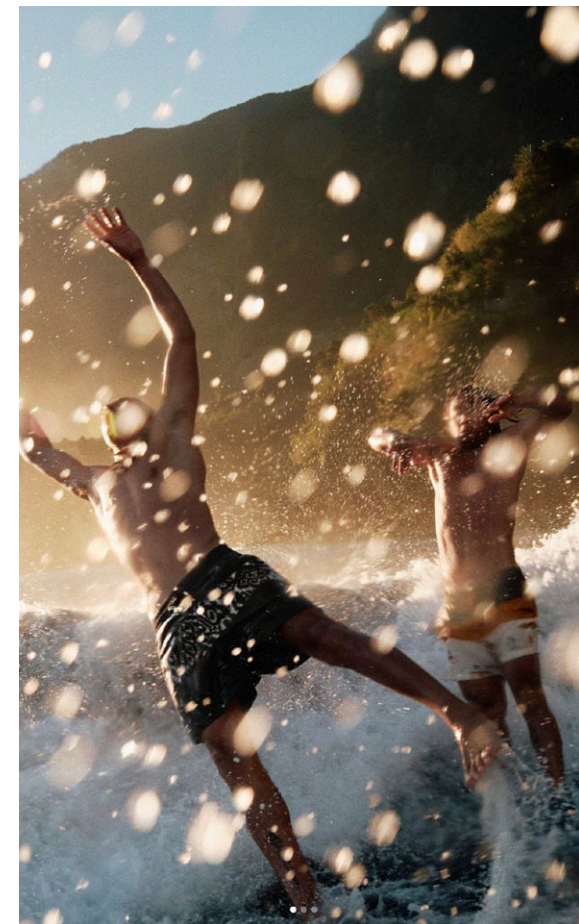
- Bio-acetate front and temples
- Recyclable demo lenses
- Spring hinges

## SIZING

A measurement:	49	ED measurement:	53.1
B measurement:	40	Panto angle:	9
DBL measurement:	21	Base curve:	450
Temple length:	135		

## ONB 4026

Angled cat eye bio-acetate frame.





**ONB 4029 - 102**

Matte tort



**ONB 4029 - 106**

Matte blue / Grey

## TECHNICAL SPEC

- Bio-acetate front and temples
- recyclable demo lenses
- Spring hinges

## SIZING

A measurement:	54	ED measurement:	60
B measurement:	42.7	Panto angle:	9
DBL measurement:	15	Base curve:	450
Temple length:	135		

## ONB 4029

Oversized soft square bio-acetate frame.

