

A man and a woman are featured in a studio setting. The woman, on the left, has long brown hair and is wearing a red dress with a colorful fish pattern and black-rimmed glasses. The man, on the right, has curly brown hair and a light beard, wearing a dark blue denim jacket with a skull and crossbones patch and thin-rimmed glasses. The background is a gradient from orange to light blue.

SUPERDRY® 冒險魂

SS22 Optical Collection

SS22

7 models / 26 skus: 3 male / 1 unisex / 3 female

- The collection features petite eye sizes, 4x models size 49 and below.
- NEW branding treatments – metal temple with raised logo detailing featured on combination models.
- Branded core wire treatment with fluro colour pops.
- NEW colour details - hand painted colours in nude / blush pink and new crystal colours in bottle green / teal / blue / smoke.

Front cover: SDO 2008 - 107 / SDO 2009 - 001 Opposite: SDO 2007 - 117



SDO 2003

Universal and modern. Performance designed in an on-trend hex eye shape.

DESCRIPTION

- Acetate / Stainless steel
- Hex detail eye shape
- Raised Superdry temple branding
- Spring hinges
- 3 colour hand painted signature tip detail

SIZING

- 49 | 20 | 140 b: 43.5
- ED measurement: 52.2
- Panto angle: 9
- Base curve: 450



SDO 2005

Superdry original designed for the everyday wearer. Crafted combination style dressed in heritage on brand colourways.

DESCRIPTION

- Thermooptics / Monel
- Square eye shape
- Raised Superdry temple branding
- 3 colour hand painted signature tip detail

SIZING

- 52 | 18 | 145 b: 41.5
- ED measurement: 56.5
- Panto angle: 9
- Base curve: 450





SDO 2006

Born to be seen, spirited thermoptics material with sporty aesthetics. Activate your wardrobe in varsity or neon highlights.

DESCRIPTION

- Thermoptics material
- Branded bespoke core wire
- Bevelled temple detail and spring hinges
- 3 colour hand painted signature tip detail

SIZING

- 53 | 19 | 145 b: 41.1
- ED measurement: 55.7
- Panto angle: 9
- Base curve: 450





SDO 2007

Built on style, a trio of eyewear essentials channelling vintage femininity with statement keyhole bridge and considered colourways.

DESCRIPTION

- ThermoOptics / Monel
- Butterfly eye shape
- Raised Superdry temple branding
- 3 colour hand painted signature tip detail

SIZING

- 49 | 18 | 145 b: 43.5
- ED measurement: 54.4
- Panto angle: 11
- Base curve: 450



SDO 2008

Creative take on the iconic round. Statement style inspired by vintage Americana featuring Superdry branding.

DESCRIPTION

- Thermooptics / Monel combination frame
- Integrated spring hinge
- Raised Superdry temple branding
- 3 colour hand painted signature tip detail

SIZING

- 48 | 21 | 140 b: 41.9
- ED measurement: 51
- Panto angle: 9
- Base curve: 450



SDO 2009

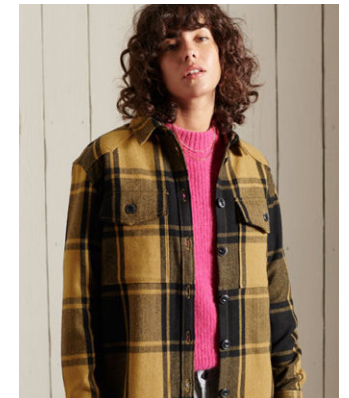
Authentic and original. Reinventing the aviator with a streamlined silhouette, thrift vintage styling and details.

DESCRIPTION

- Monel / Acetate
- Semi rimless aviator
- Deboss logo detail on temple top
- 3 colour hand painted signature tip detail

SIZING

- 54 | 16 | 145 b: 43.4
- ED measurement: 60.6
- Panto angle: 9
- Base curve: 450



SDO 2012

Retro minimalism, classic slim aesthetic reimaged with creative geometric silhouette in understated metallics.

DESCRIPTION

- Monel / Acetate
- Semi rimless hex shape
- Raised Superdry temple branding
- 3 colour hand painted signature tip detail

SIZING

- 48 | 21 | 140 b: 43.2
- ED measurement: 50.5
- Panto angle: 9
- Base curve: 450

